

**GEDA®**  
500 Z/ZP



**GEDA®**  
ORIGINAL



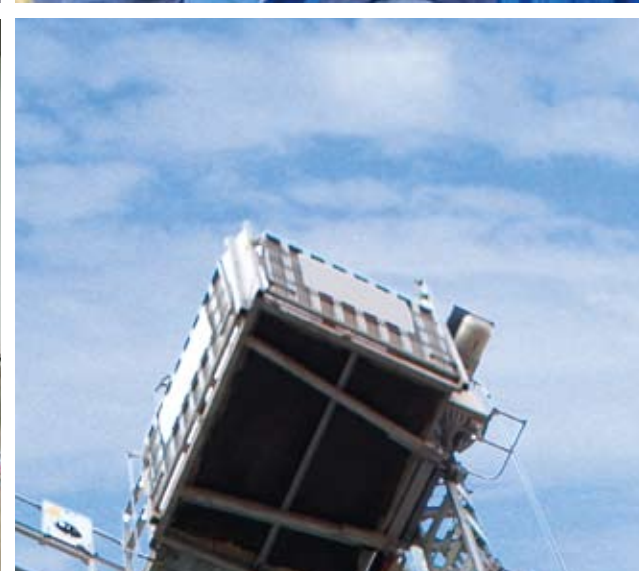
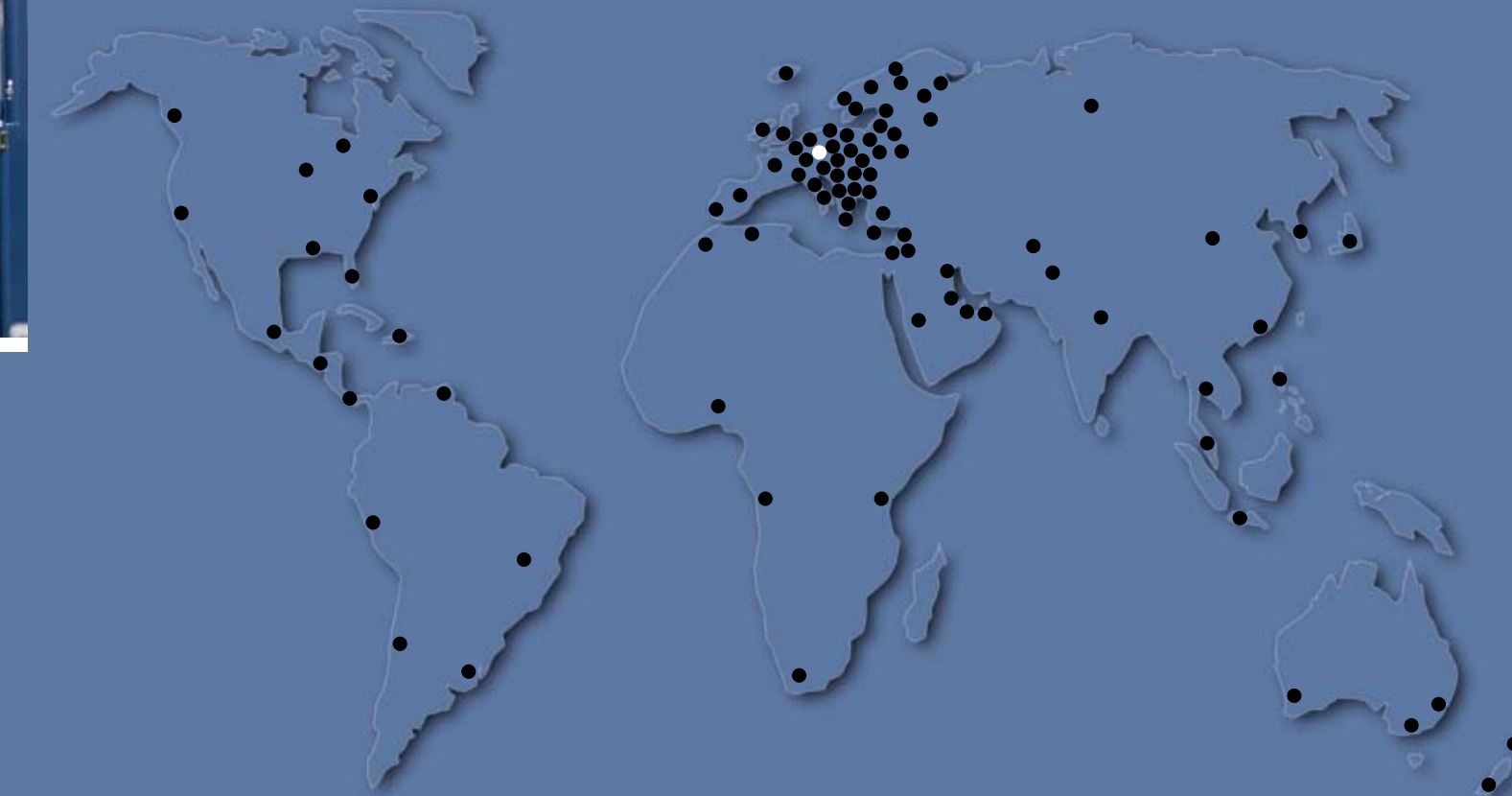
▷ Innovations  
▷ Know-how  
▷ Up-to-date production technologies



**GEDA®**  
ORIGINAL



**GEDA®**  
World-wide competence



**GEDA®**  
500 Z/ZP

Your dealer:

**GEDA®**  
ORIGINAL

**GEDA-Dechentreiter  
GmbH & Co. KG**

Mertinger Straße 60  
D-86663 Asbach-Bäumenheim  
Phone +49 (0) 906 9809-0  
Fax +49 (0) 906 9809-50  
info@geda.de  
[www.geda.de](http://www.geda.de)

4 Using the assembly bridge, the unit can be anchored conveniently at any height – especially when being used directly against the facade without using a scaffold.

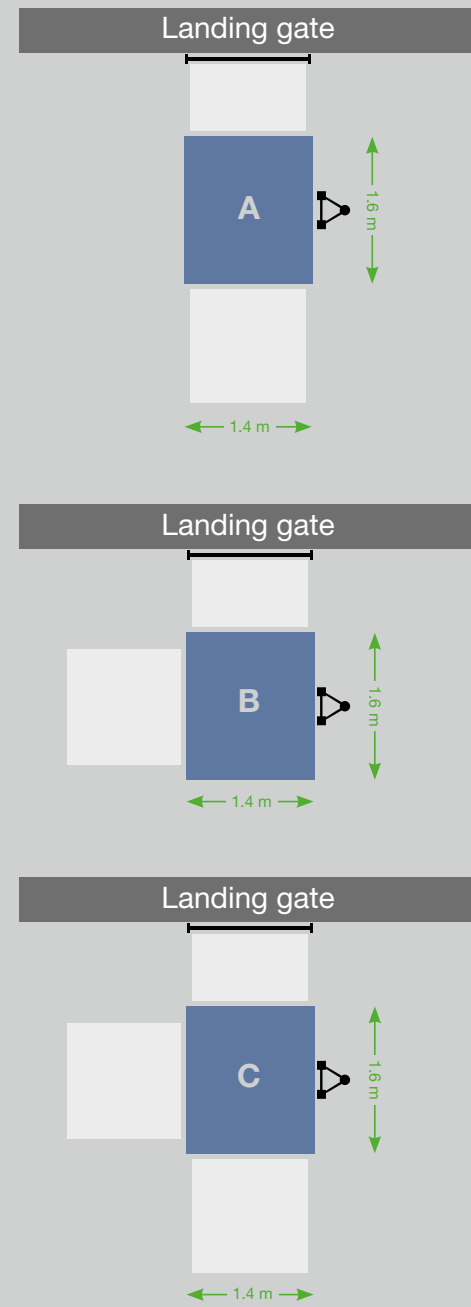
5 A special bracket enables hazard-free transport of longer scaffold elements.

6 A trailer is optionally available for road transport. It's easy to load and unload using the transport platform drive.

**GEDA®**  
500 Z/ZP

Transport platform for persons and material

**Platform versions:**



**GEDA®**  
**UNI-MAST**

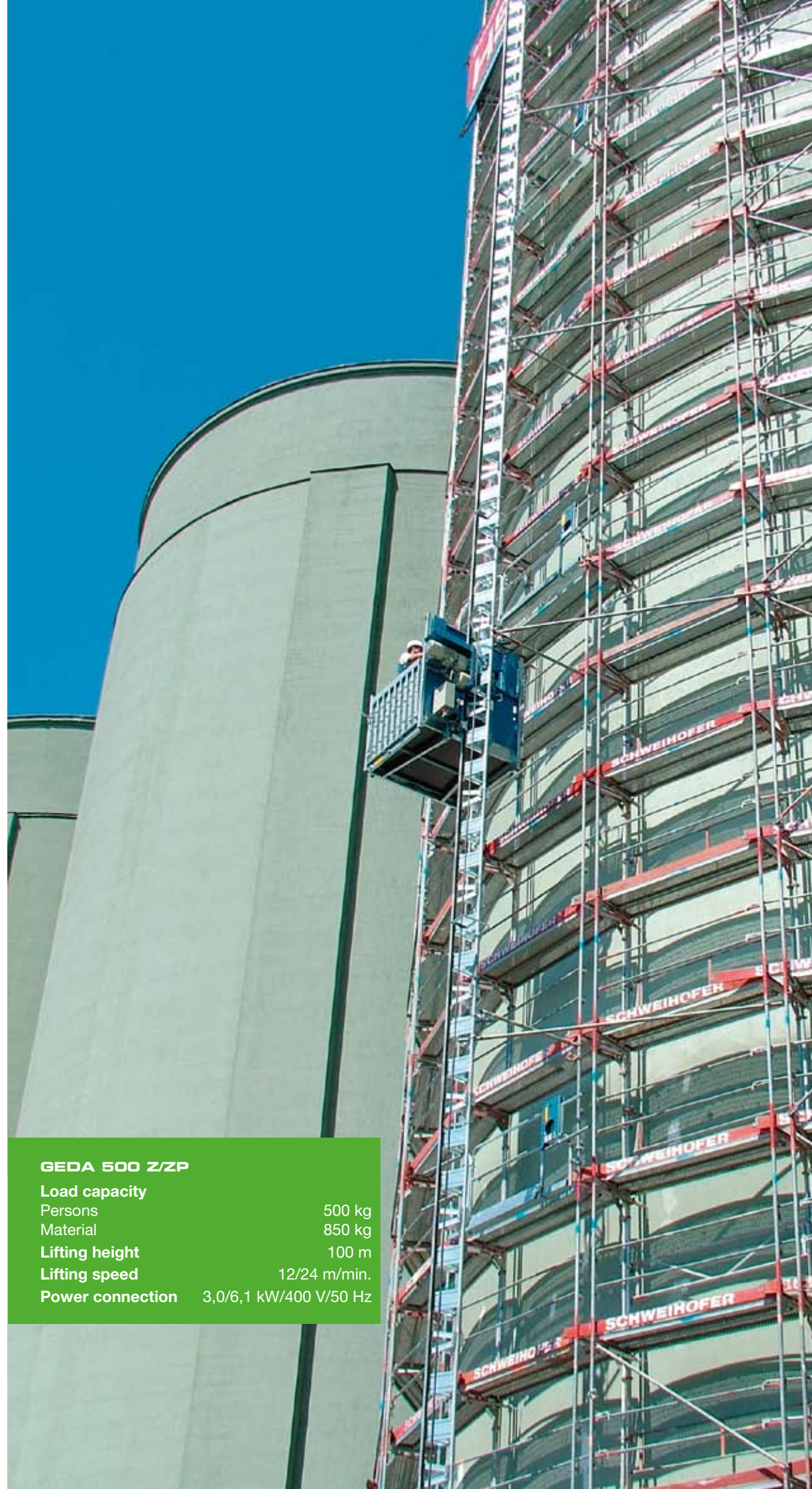
An ingenious system: you can use the GEDA UNI-MAST for all GEDA rack and pinion hoists from 300 kg to 2000 kg load bearing capacity. **Flexible and economic working with only one mast system!**



Only put together the 1.5 m mast sections and screw them with captive screws and safety nuts.



GEDA 500 Z/ZP	
Load capacity	500 kg
Persons	850 kg
Material	100 m
Lifting height	12/24 m/min.
Lifting speed	3,0/6,1 kW/400 V/50 Hz
Power connection	



**Your powerful partner for heavy loads and efficient work methods.**

The GEDA 500 Z/ZP is indispensable both for rapid scaffold assembly and for any subsequent work. Due to minimal space requirements, high load bearing capacity and numerous modes of employment, it saves time and guarantees optimum logistics in construction.



1 It's even worth using for low lifting heights.

2 Platform and ramp are designed for heavy loads.

3 Landing level safety gates are mounted at loading and unloading points as protection against falling.